

# **MOTEURS BERNARD**

## **56/82 V12**

**TECHNICAL CATALOG**  
**2025/2026**



# TABLE OF CONTENTS

**1**

Engine Overview

**2**

Key benefits

**3**

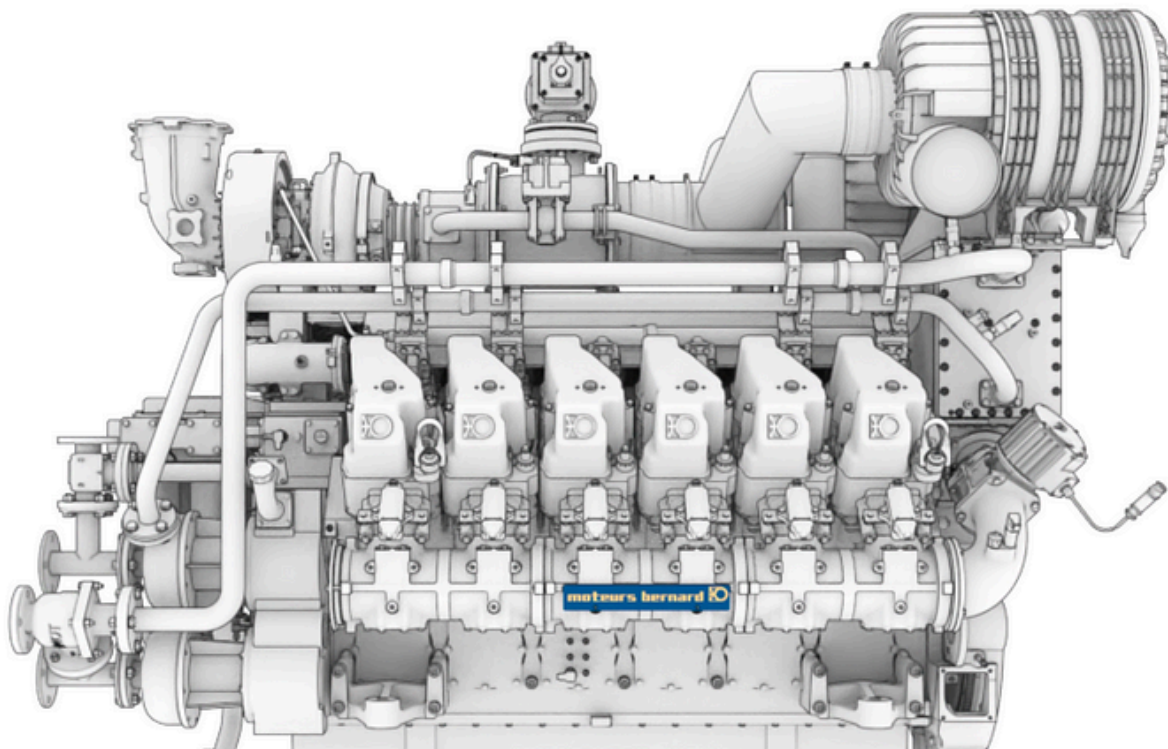
Technical data

**4**

Technical diagrams & sketches

**5**

Contacts



# Engine Overview

## **An engine designed for industrial performance**

The Moteurs Bernard 56/82 V12 engine is designed to deliver high power, optimal fuel efficiency, and mechanical robustness. Thanks to its modern architecture and high-quality components, it meets the needs of the most demanding industrial, marine, and railway applications. Its compact structure and performance-oriented design ensure stable and sustainable energy production, even in environments subject to high operational stresses.

Its design also facilitates access to key components, simplifying inspection and maintenance operations. This approach reduces downtime and helps optimize operating costs throughout the engine's life cycle. Finally, the 56/82 V12 offers integration flexibility, allowing it to be adapted to different types of installations, whether in marine, rail, or fixed industrial infrastructure environments.



# Key Benefits

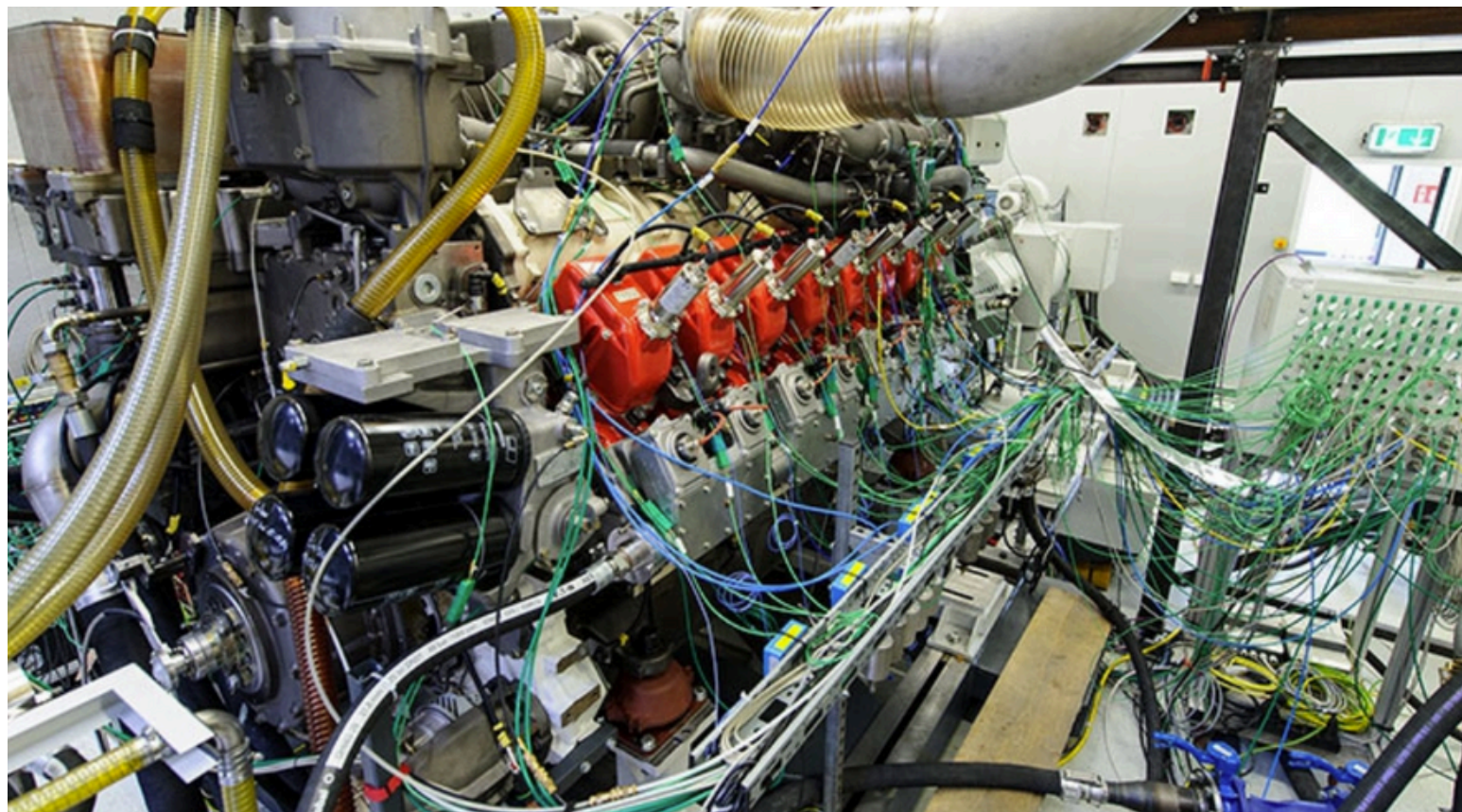
## TECHNICAL ADVANTAGES

- Compact and robust V12 architecture, designed for long-lasting performance.
- High energy efficiency for stable and efficient production.
- High-quality components ensuring long-term mechanical reliability.
- Optimized dimensions for easy integration into a variety of configurations.
- 1000 kW electrical power suitable for demanding industrial environments.

## OPERATIONAL STRENGTHS

- Simplified access to key components to reduce inspection and maintenance times.
- Designed to reduce operating costs throughout the entire life cycle.
- Suitable for industrial, maritime, and railway applications.
- Modular structure allowing flexible installation according to customer requirements.
- Controlled weight and dimensions for easy transport and integration.





# TECHNICAL DATA

## Genset Performance /efficiency

### Natural gas & Bio-methane applications, 50Hz

Electrical output	kW	1000
Electrical efficiency	%	43.3
Thermal output	kW	744
Thermal efficiency	%	33.1
Overall efficiency	%	76.4

### Technical Data

Bore/Stroke	mm	156/182
No of cylinder		12
Speed	rpm	1500
Length	mm	4020
Width	mm	1480
Height	mm	2400
Dry weight	kg	8900

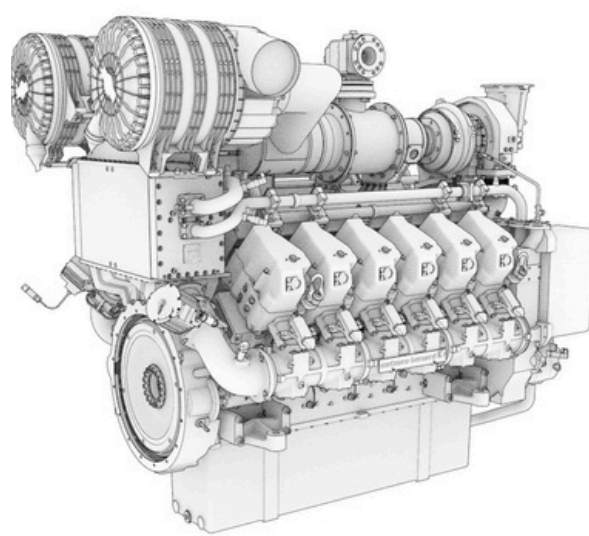
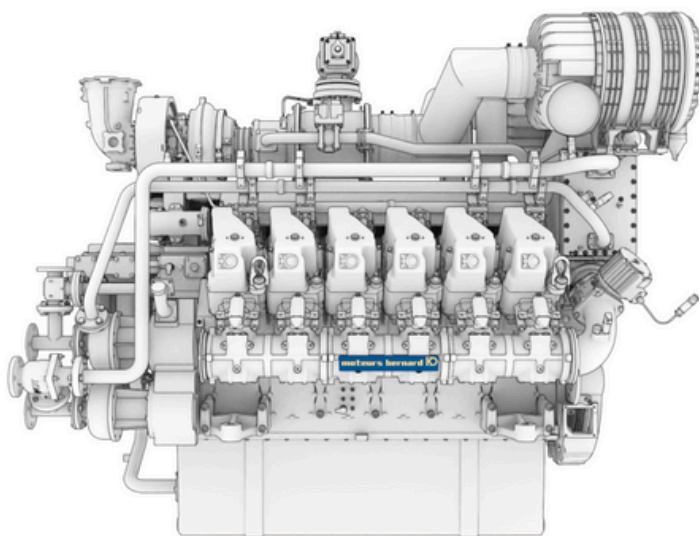
The Moteurs Bernard 56/82 V12 engine develops an electrical power output of 1000 kW with an energy efficiency of 43.3%. Its 12-cylinder configuration ensures stable and efficient energy production, even in demanding industrial environments.

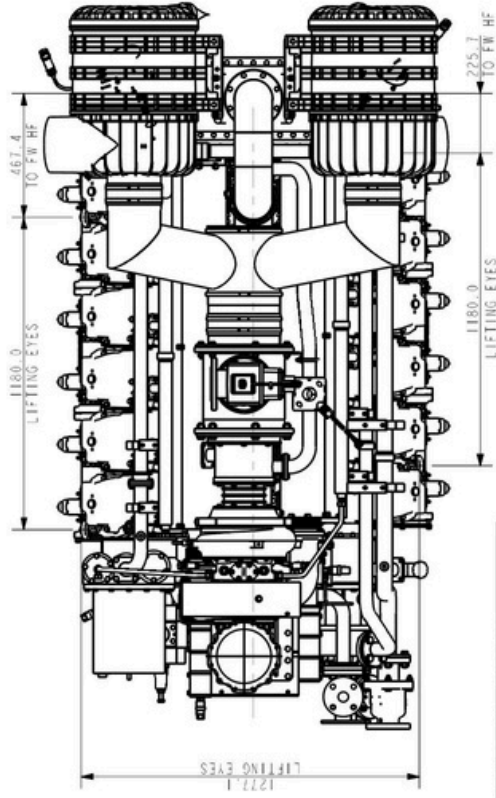
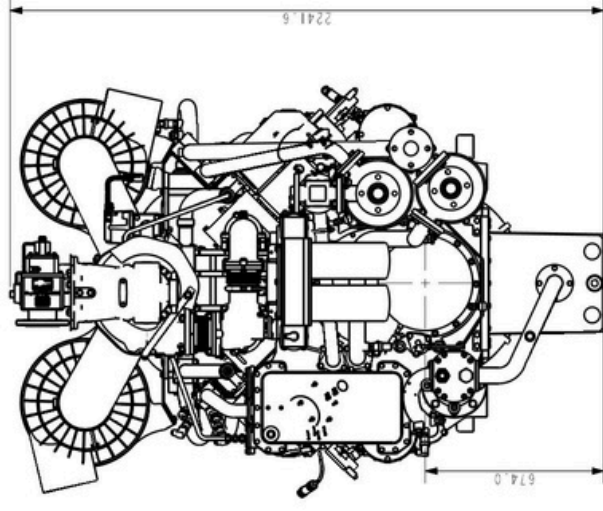
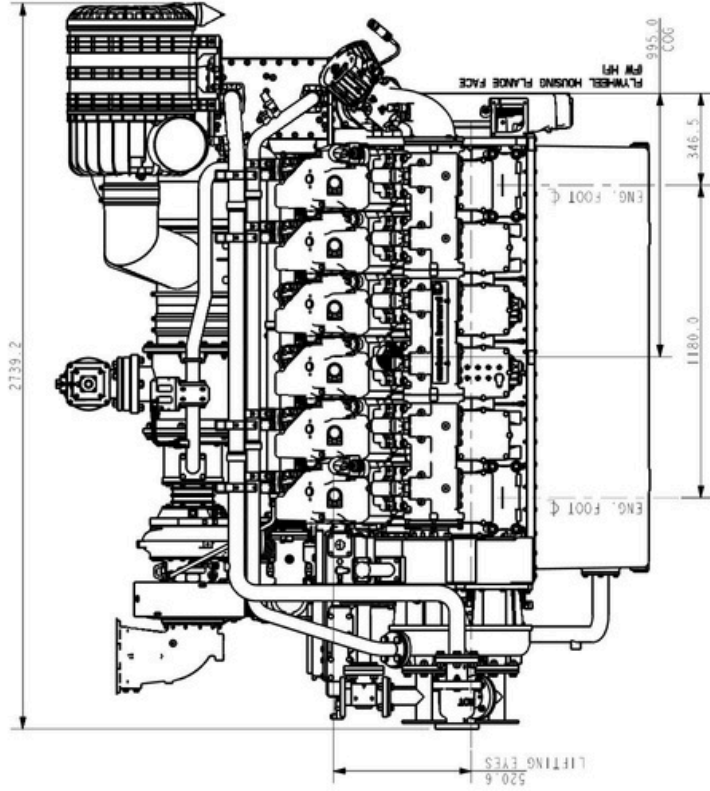
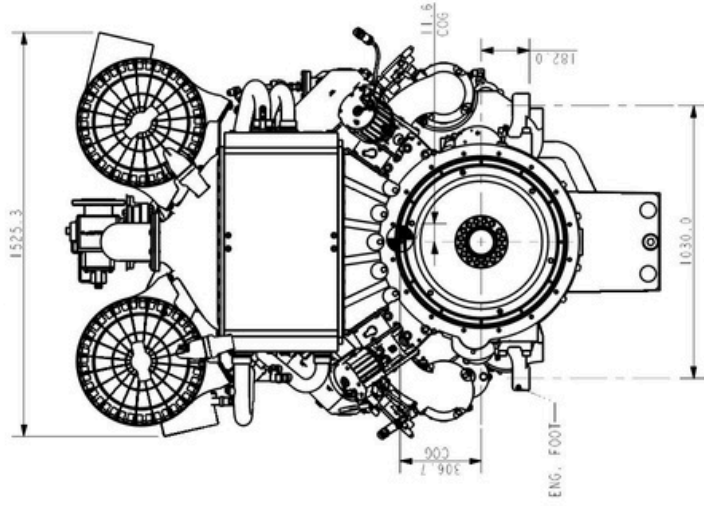
Operating at 1500 rpm, it benefits from an optimized architecture to ensure reliable and durable operation. Its compact dimensions and weight of 8900 kg facilitate its integration into various applications where performance and robustness are essential.






# Technical diagrams & sketches





ITEM NO	PART NUMBER	QTY	DESCRIPTION	NOTES
1	GBB-A-01-0006	1	CRANKCASE ARRANGEMENT	
2	GBB-A-02-0002	1	V12 CRANKSHAFT SYSTEM	
3	GBB-A-03-0005	1	CON POD ARRANGEMENT	
4	GBB-A-04-0003	12	CYLINDER HEAD ASSY	
5	GBB-A-05-0001	1	E HAUST SYSTEM ARRANGEMENT	
6	GBB-A-07-0002	1	CHARGE SYSTEM	
7	GBB-A-08-0001	1	VALVE TRAIN ASSY	
8	GBB-A-10-0002	1	WATER SYSTEM	
9	GBB-A-11-0006	1	OIL SYSTEM	
10	GBB-A-12-0002	1	GENSET BASE FRAME ASSEMBLY	


FORM:	<p>ALL DIMENSIONS IN MILLIMETERS UNLESS OTHERWISE STATED.  DIMENSIONS TYPED TO 150 101 164 AND 150 8905-2011  UNLESS OTHERWISE STATED, UNLAPPEDED  UNLESS OTHERWISE STATED TO 150 2553 2013  UNLESS OTHERWISE STATED, ALL SHARP EDGES TO BE  RADIUS 6.5 - 8.0 PERIOD OF 90 DEGREE</p> <p>UNLESS OTHERWISE STATED, ALL SURFACES MARKED  A  IN ACCORDANCE WITH FIG. 1, A, 1.2, 1.3  TO REMAIN. SURFACES 1, 1.1, 1.2, 1.3 ALL SURFACES MARKED  TO BE LEFT UNCHANGED UNLESS REQUIRED TO MEET  SPECIFIC REQUIREMENTS TO 150 8905-2011  UNLESS OTHERWISE STATED.</p> <p>THIS DOCUMENT IS THE EXCLUSIVE  PROPERTY OF THE COMPANY  WITHOUT THE WRITTEN PERMISSION  OF THE COMPANY  CONFIDENTIAL AND MUST NOT BE  REPRODUCED OR DISCLOSED  M/S R</p>
APPROVED:	
DRAWN:	

USED IN:	SAPAIC
MATERIAL:	
TITLE: V12 ENGINE LAYOUT	
	ALL CRITICAL FEATURES ARE CIRCLED • DO NOT SCALE
DWG/PART No: BGD-A-16-0003 _ENGINE	SHEET: 1 of 4 ISSUE: DR-E-MASSING: 55

moteurs-bernard.fr

# Got a project? Let's talk about it !

**moteurs bernard** 

 +33 (0)4 78 91 10 10

 [xfbernard@moteurs-bernard.com](mailto:xfbernard@moteurs-bernard.com)

